



2008 and 2011 Certified Biomimicry Professionals

BIOMIMICRY PROFESSIONAL CERTIFICATION PROGRAM

September 2013–October 2015

Biomimicry 3.8



BIOMIMICRY 3.8

Biomimicry.Net | AskNature.Org
+1 406 543 4018

140 S. 4th St. W., Ste. 2
Missoula, MT 59801 USA

“We’re awake now, and the question is how do we stay awake to the living world? How do we make the act of asking nature’s advice a normal part of everyday inventing?”

~ Janine Benyus

Become a Certified Biomimicry Professional

< START HERE >

Biomimicry.net/educating/professional-training/bprofessional



“The BProfessional program has forever changed my career path. I am thrilled with the new knowledge, new perspectives, and new friends I’ve made as a result of my two- year investment and I wouldn’t change it for the world.”

*~ Amy Coffman-Phillips
Architect, Chicago, Illinois, USA*



BRING LIFE BACK INTO YOUR LIFE

The globally renowned Biomimicry Professional (BProfessional) Certification Program is a part-time, two-year, master's level course designed to empower change-agents whom are passionate about a world mentored by life's genius. Graduates from the program work toward innovative and sustainable solutions to the most pressing global challenges, from the way we conduct business, design buildings and products, run governments, provide healthcare, manufacture our goods, to how we educate future generations, drawing upon time-tested sustainable solutions of the last 3.8 billion years.

CORE PURPOSE

The core purpose of the BProfessional Program is to train and mobilize an international, networked community of professional biomimics who become the leaders in this new practice.

Practitioners will join us as consultants, educators, designers and inventors, bringing nature's best design strategies into the solution space across all disciplines, industries, and practices.

This transformative program builds on the three core values of biomimicry: **the ethics of sustainability, the innovative emulation of the natural world, and reconnection with the natural world.**



My journey into biomimicry has been indeed life changing, this new vision of the world came to me in one of the most important and transitional periods of my life and my country.

~ Sara El Sayed
Biologist, Cairo, Egypt

>> EXPERIENCE THE GENIUS OF PLACE

in six unique and spectacular ecosystems around the world

>> DEVELOP A COMPELLING VISION

for your role in the world's sustainable transformation

>> DELVE DEEPLY INTO PERSONAL DEVELOPMENT

specifically focused on your core assets, in order to grow individually and thereby into a more effective leaders

>> ESTABLISH TIGHTLY-KNIT RELATIONSHIPS

with the diverse members of your cohort from around the world

>> EMBARK ON A TRANSFORMATIVE JOURNEY

that develops personal and professional leadership in ushering in a world fostered and empowered by nature's genius

PROGRAM OUTCOMES



DISCOVER AND EXPLORE

Nature's Patterns And Strategies

By quieting cleverness, awakening senses, reconnecting, and echoing nature's elegant survival strategies across many applications, Certified Biomimicry Professionals are trained to:

- **Cultivate** awe for the natural world and inspire others to engage with nature
- **Hone** deep observation skills while learning a wealth of information about life's strategies for success
- **Facilitate** the generation of biologically-inspired design ideas in the field
- **Share** compelling visions for locally-attuned sustainable innovation.



INNOVATE AND LEAD

Based on 3.8 Billion Years Of R&D

Certified Biomimicry Professionals solve design challenges using nature as mentor, model, and measure for developing truly sustainable solutions. By inspiring and enabling others with biomimicry, they are capable of:

- **Supporting** and **growing** biomimicry practices through training, consulting, facilitating, and speaking to others
- **Accelerating** a widespread cultural shift to sustainable innovation
- **Adopting** and **elevating** whole systems thinking
- **Effecting** global positive change through biomimicry leadership.

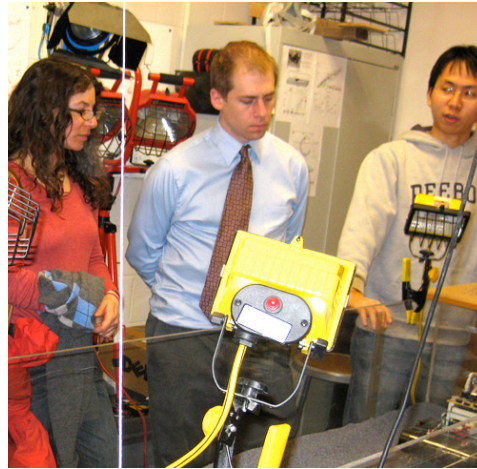


SERVE THE GROWING DEMAND

For Emerging Biomimicry Practices

As early adopters and innovators, Certified Biomimicry Professionals have a critical voice within the leadership community that's inspired by nature to foster a more functional and sustainable world. They help transition individuals, organizations, cultures and, ultimately, all of society by:

- **Disseminating** biomimicry thinking, methodology, and Life's Principles
- **Inspiring** new and diverse audiences through speaking
- **Consulting** and **educating** current and future generations of adopters
- **Leveraging** change as "trim tab" leaders (as envisioned by Buckminster Fuller).



CONNECT AND COLLABORATE

Across Disciplinary Boundaries


Trained to cross the boundaries of design, biology, business, and engineering, Certified Biomimicry Professionals engage with and draw upon the world's most trained and experienced emerging global network. Their interdisciplinary training and community of practitioners, enables them to:

- **Connect** with the core Biomimicry 3.8 practitioners network to identify relevant and cutting-edge collaboration opportunities
- **Keep current** on the latest advancements and best practices in sustainable innovation through biomimicry
- **Foster** interdisciplinary teamwork for breakthrough thinking and doing
- **Access** the latest tools, information and resources that support emerging biomimicry practices.

PROGRAM FORMAT

The BProfessional Certification Program is accessible to working professionals, yet has the rigor of a master's degree. It is comprised of six, face-to-face, week-long learning sessions interspersed with online learning modules. In addition to the intensive, in-person sessions, participants spend on average a minimum of 6–10 hours each week for the program. A one-month intersession break in September 2014 allows time for reflection and personal exploration.

This highly selective program is comprised of only 20 participants. It includes five people each from design, business, biology, and engineering. Seven instructors guide the program both online and in-person.



“An invaluable and personally enriching element of this program is the connections you will make with other, like-minded souls from many cultures around the world. This is the key to a hopeful future; discovering that you are part of a world movement. In the end, the BProfessional is for those who truly want to make a difference, create change and work with others on this planet to spread the biomimicry meme.”

- Doug Paige
Industrial Designer
Cleveland, Ohio, USA

INSTRUCTORS



DAYNA BAUMEISTER, PhD

*Keystone & Co-Founder, Biomimicry 3.8
Helena, Montana USA*

Dayna's fascination with the natural world began with daily forays into the woods and mountains of Colorado and eventually led to a BS in marine biology, an MS in resource conservation and a PhD in organismic biology and ecology. With a background in biology, a devotion to applied natural history, and a passion for sharing the wonders of nature with others, Dayna has worked in the field of biomimicry with business partner Janine Benyus since 1998 as a business catalyst, educator, researcher, and design consultant. Together they founded the Biomimicry Guild consulting practice, The Biomimicry Institute 501c3, and most recently, Biomimicry3.8, a B-Corp social enterprise that trains, certifies, and connects biomimicry professionals worldwide.

Dayna is a natural systems thinker and brings a unique perspective to her work to help others see nature as model, measure, and mentor. She

has helped more than 100 companies consult the natural world for elegant and sustainable design solutions, including Nike, Interface, General Mills, Boeing, Herman-Miller, Kohler, Seventh Generation and Procter & Gamble. In 2008, Dayna designed the world's first Biomimicry Professional Certification Program, a two-year master-level course in biomimicry. As senior editor, Dayna compiled a decade of experience in biomimicry into a practical how-to guide *Biomimicry Resource Handbook: A Seed Bank of Knowledge and Best Practices* (2011). All of this has helped fertilize the movement of biomimicry as a fresh and innovative practice and philosophy to meet the world's sustainability challenges.

Dayna lives with her family in Montana where she is a gardener, green remodeler, hunter-gatherer, backpacker and naturalist.



KAREN ALLEN, MS

*Ecologist, Educator
Certified Biomimicry Professional (2008-2010)
Bend, Oregon, USA*

Karen is a Certified Biomimicry Professional, biologist, and educator passionate about sharing the secrets of the natural world to inform sustainable innovations. Her interdisciplinary science background and love of natural history help Karen serve as a Biologist at the Design Table, translating nature's strategies for architects, engineers, and designers. She is an integral part of Biomimicry 3.8's teaching and consulting team, leading innovators in understanding the practice of biomimicry. In addition to the Biomimicry Professional program, she is currently co-developing and teaching the 8-month Biomimicry Specialist Program and other workshops. She has been practicing biomimicry since 2000 and is co-founder of Biomimicry Oregon. Karen also has her own restoration ecology practice in Central Oregon, where in her spare time she explores the outdoors and enjoys gardening, swimming, and playing music with friends.



ERIN LEITCH

*Design Strategist, Biomimicry 3.8
Certified Biomimicry Professional (2008-2010)
Mexico City, Mexico*

With a background in architecture and sustainable building advisory, Erin is Director of the BSpecialist program, the design instructor for the BProfessional program, and a design strategist for Biomimicry 3.8's clientele. Erin has worked with developers, planners, architects and engineers to understand and act on their unique opportunity to design, build, and operate resiliently and abundantly within Earth's operating conditions. She has supported over 30 built environment projects as sustainable design advisor in the US and internationally. Her sustainability framework experience includes Biomimicry, Living Building Challenge, The Natural Step, and LEED BD+C, CI, CS and ND. Erin splits her time between Mexico City and Valle de Bravo with her partner where between practicing her Spanish, juggling two households, and exploring Mexico's beautiful landscape and culture there is never a dull moment!



MARIE ZANOWICK, MS

*Biomimicry Professional, EPA
Certified Biomimicry Professional (2008-2010)
Boulder, Colorado USA and British Columbia,
Canada*

Marie is a Certified Biomimicry Professional and a creative environmental engineer with 25 years experience working for the U.S. Environmental Protection Agency in the areas of pollution prevention and sustainability. She combines her background in biology, public health, and civil engineering with her regulatory experience and facilitation skills to produce innovative solutions to a wide range of challenges. Marie uses biomimicry to assist federal agencies in developing and implementing sustainability management systems as well as providing technical assistance to EPA, Federal, State and local governments and industry as they find innovative ways to reduce pollution and move towards sustainability. Marie also serves as an EPA international biomimicry expert to provide regulatory and sustainability assistance to developing countries.



ZEYNEP ARHON, MBA

*Innovation consultant
Certified Biomimicry Professional (2008-2010)
Istanbul, Turkey and San Francisco, California USA*

Zeynep drives innovation processes in the corporate world by leveraging a unique combination of nature and future. The core of her work comprises answering business questions with nature-inspired solutions, assessing market landscapes for the next 3-5 years, and facilitating the translation of nature's strategies and future foresights into innovative business ideas. Her corporate background includes strategic leadership and brand management positions at leading multinationals such as The Coca-Cola Company. Zeynep believes in the power of business to shape the future and the power of nature to transform business into a graceful human activity – a belief that fuels her hope in biomimicry. The same belief drives her consultancy practice, her editorial work for business publications in Turkey, and her teaching with Biomimicry Professional Program.



THOMAS BAUMEISTER, PhD

*Wildlife Biologist, Conservation Educator
Executive Director, Montana WILD, Montana FWP
Helena, Montana, USA*

Fueled by a deep passion to understand and realize the potential of nature for human wellbeing, Thomas has been creating pathways for people to connect with nature throughout his professional and personal life. Wild in spirit and disciplined in practice, he strives to keep Montana as one of the last best places for people and nature. Serving as executive director for Montana WILD, the state's first conservation education center operated by Montana Fish, Wildlife & Parks, as well as lecturing about the Human-Nature connection at Carroll College, Thomas is known for his creativity, systems thinking, strategic innovation, and promoting stakeholder involvement. In 2000 and 2008, Thomas received the Governor's Award of Excellence, and in 2008 he was selected to the prestigious National Conservation Leadership Institute. He lives by what he advocates, and has developed rituals and traditions to live a life enriched by wild things.



SCOUT WILKINS

*Personal Optimization Coach and Mentor
CTACC, Master NLP Practitioner and Trainer
Hamilton, MT and Springdale, UT, USA*

Scout's passion is fostering creativity, innovation and solutions-oriented action. She brings both a solid background in natural history and outdoor leadership, and powerful business experience and resources. She was the co-founder & COO of a vibrant multi-million dollar custom home building business, served for five years as the Executive Director of an international trade organization, is a seasoned Strategic Visioning & Facilitation specialist and runs a thriving business online. In her private practice, Scout works with leaders around the world, helping them fine-tune their inner game to expand their possibilities and to become massively influential and effective. She lives in Springdale, Utah where you are most likely to find her out exploring the red rock canyons, playing music or creating art...or just being delightfully still and present.

SIX IN-PERSON SESSIONS

A key characteristic of a biomimicry leader is the ability to interpret and connect with nature and complex ecosystems. Over the course of the two years, you will study the awe-inspiring genius of place during six different one-week sessions in unique ecologies around the world.

The intertidal zone has been my favorite session to date for me—having Kate, Jack and David with us for *so* many days and being out in nature with them learning from them was, like always, better than being in a “classroom” setting. This session really exemplifies what the program is about.

~Marsha Forsthoefler,
Chemical Engineer, Atlanta,
Georgia, USA



**Temperate
Coniferous Forest
and Short Grass
Prairie**

Augusta, Montana,
USA

Pine Butte Guest
Ranch

September 23–30,
2013

In-Person Key Topics and Activities

Field Trips • Guest Lectures • Biomimicry Methodology • Facilitation Skills
 Reconnecting With Nature • Genius Of Place • Presentation Skills • Systems Thinking
 Group Communication Skills • Professional Development Support • Life's Principles
 Enabling Technologies • Current Biomimicry Applications



				
Sonoran Desert	Pacific Rainforest & Marine Intertidal	Tropical Rainforest & Coral Reefs	Temperate Deciduous Forest	African Savannah & Wetlands
Phoenix, Arizona, USA	Tofino, Vancouver Island, Canada	Uvita, Costa Rica	Highlands, North Carolina, USA	Botswana or South Africa
Saguaro Lake Guest Ranch	Tofino Biological Gardens Ecolodge	La Cusinga Ecolodge	The Mountain Retreat	Venue TBD
February 9-16, 2014	June 22-29, 2014	December 3-10, 2014	May 8-15, 2015	Late September 2015

ONLINE COURSEWORK

A key differentiator for the BProfessional program is how it structures online learning. Our coursework is designed to have the participant feel very connected both to his or her instructors, but also to each other. Each on-line course is taught in a synchronous format, in which the students and instructor participate in various educational activities at the same time, regardless of their physical location. Live discussions and lectures are a key element of each on-line course and are recorded for accessing at times most convenient for each program participant. Because our participants span a wide multitude of time zones, course scheduling is designed to provide optimal timing.

Course activities, assignments, reading requirements, and both group and individual work will vary at the discretion of course instructors who design each course to make the material as accessible and valuable to your program experience as possible.

> IN-PERSON SESSION #1 <

SEMESTER #1



> IN-PERSON SESSION #2 <

SEMESTER #2



> IN-PERSON SESSION #3 <

SEMESTER #3



> IN-PERSON SESSION #4 <

SEMESTER #4



> IN-PERSON SESSION #5 <

SEMESTER #5



> IN-PERSON SESSION #6 <

|----- 4 weeks-----||----- 4 weeks-----||----- 4 weeks-----||----- 4 weeks-----|

■ PRACTICUM PROJECTS ■ ONLINE INSTRUCTOR-LED COURSES

ONLINE FOCUS AREAS

LIFE'S PRINCIPLES (12 WEEKS)

Life's Principles are nature's universal design guidelines based on 3.8 billion years of successful strategies across all life. With instruction by Dr. Dayna Baumeister, this 12-week course takes participants on a deep dive of Life's Principles. It includes the review and study of life's operating conditions, the six primary principles, and their related sub-principles. This course gives participants the experience necessary to bring these design guidelines into practice. The study of Life's Principles is further integrated into the in-person sessions with in-depth practice and study complemented by the online session.

INTRODUCTION TO ISITES (4 WEEKS)

For biologists and non-biologists alike, growing and improving the way that we observe and interpret the natural world is an ongoing practice of professional biomimics. The iSite course taught by Erin Leitch is designed to jump-start, re-kindle, or perhaps even catalyze the practice of nature journaling in the biomimicry style depending on each student's experience. The course kicks off with a 4-week introduction and continues throughout the program including weekly iSite tasks accompanied by sketching tips, techniques for 'quieting our cleverness', materials recommendations, and journal reviews and feedback from the instructor.

BIOMIMICRY THINKING (4 WEEKS)

Led by Dr. Dayna Baumeister, this 4-week introduction to the Biomimicry methodology reviews how biology and biomimicry can be incorporated into the four major phases of any design process: scoping, discovering, creating, and evaluating. It introduces the art of translating biological concepts into strategies for application and building a taxonomy of design principles. Biomimicry Thinking is heavily integrated across all in-person sessions, and is kicked off through this on-line course.

HUMAN-NATURE CONNECTION (12 WEEKS)

In this 12-week course, participants will explore the affinity humans have for life. Led by Dr. Thomas Baumeister, the course will provide an in-depth look at why humans seek to connect with the natural world; how this attraction to life is expressed in different cultures and contexts; and how our quality of life as individuals and communities is shaped by the richness of our connections with life. Realizing how our relationships with the natural world affects our physical, intellectual, and emotional wellbeing as individuals and communities will serve as the foundation to explore how bio mimicry fulfills some essentials needs and desires for meaningful connection.

BIOMIMICRY & DESIGN (12 WEEKS)

What does it mean to be a designer? This course considers the criteria that go into design, basic design processes, brainstorming techniques, elements of the design system, and more. You will learn how to integrate biomimicry into design and bring nature's genius to the design table. Designers in the cohort will acquire a new biomimicry-based design skill set as well as act as mentors for their interdisciplinary teams and teaching assistants.

BIOMIMICRY & ENGINEERING (12 WEEKS)

This course focuses on the basic engineering design process, methods for brainstorming, how engineers solve problems, the role of engineering in design, and more. Woven into your learning about engineering with biomimicry is how to integrate biomimicry into an engineer's process and how to communicate biomimicry with engineers. Engineers in the cohort will also acquire a new biomimicry-based engineering skill set and act as mentors to their interdisciplinary teams and teaching assistants.

BIOLOGY TAUGHT FUNCTIONALLY (12 WEEKS)

Biomimicry teaches biology through the lens of function, thereby providing a core understanding in biology for all students, no matter their background. This course explores how biologists gather and research information and how that knowledge can inform other disciplines. It also introduces the art of translating biological concepts into strategies for application, which is then carried throughout all the courses. You will learn how to work with biologists on a biomimicry team and how to weave biology and biomimicry together. The biologists in the cohort will not only learn to look at nature through the function lens, but also act as subject matter experts for their interdisciplinary teams and teaching assistants.

BIOMIMICRY & BUSINESS (12 WEEKS)

This course focuses on basic business practices and terminology, what considerations go into a successful business plan, the fundamentals of business design and decision-making, intellectual property issues, and more. Woven into your learning about doing business with biomimicry is how to communicate biomimicry clearly and compellingly to an audience of businesspeople, many of whom will be unfamiliar with the discipline. Businesspeople in this cohort will acquire a new biomimicry-based business skill set as well as act as mentors for their interdisciplinary team and teaching assistants.

PRACTICUM PROJECTS

Practicums during each of four semesters, allow participants to dive deep into specific biomimicry tools and techniques, while honing interdisciplinary communication skills. Depending on the specific practicum, you will either work solo or in interdisciplinary teams of up to 4 students. Teams are formed based on topic preferences of individual students as well as team distributions and dynamics. The projects are self-directed by the team with guidance from specific instructors. Outside mentorship, when appropriate is coordinated by the instructors and draws on the Biomimicry 3.8's extensive professional network worldwide.

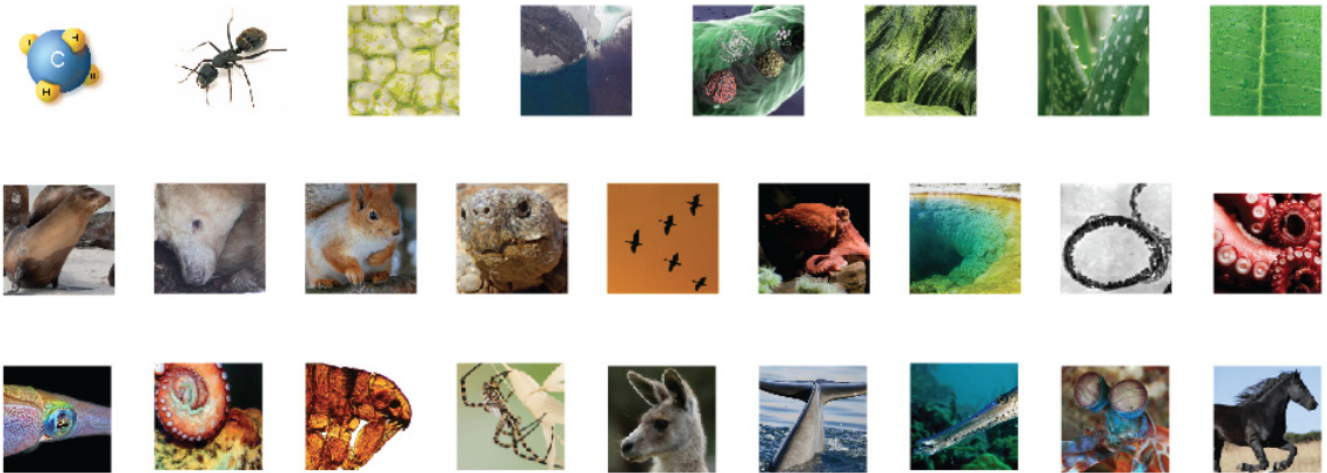
BIOMIMICRY CASE STUDIES	Deep analysis and research into specific case studies
BIOBRAINSTORM	Discovering nature's strategies for specific design challenges
GENIUS OF PLACE	Drawing on place-based expertise to reveal locally-attuned patterns
VIRTUAL DESIGN LAB	Customized biomimicry work driven by student's passions

HOW DOES NATURE >> STORE ENERGY, MANAGE CHEMICAL ENERGY, DELIVER CONSISTENT VOLTAGE

ENERGY TYPES

STRATEGIES

INDEX



All | Chemical | Kinetic | Electromagnetic | Thermal

Biology:
Strategy & Mechanism

Design
Principles

Design
Ideas

Existing
Biomimicry

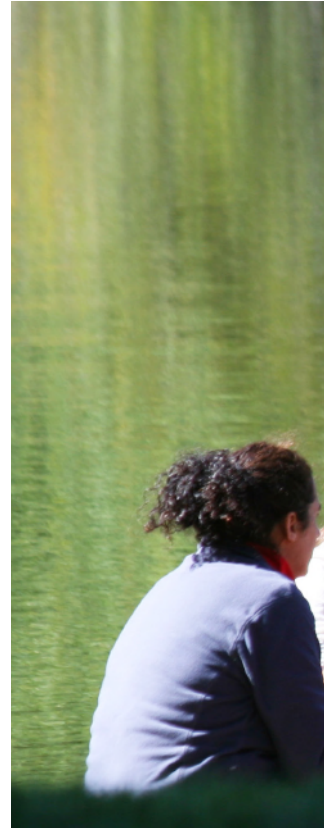
Strategies

champions

COCOON GROUPS

Deciding to focus your career on biomimicry can be both exhilarating and daunting. BProfessional participants will likely find themselves undergoing significant professional and even personal transformations as they journey through the program. Cocoon groups are formed to provide an open and safe space to reflect on the experience of the program and discuss goals and develop powerful strategies for success.

The cocoon groups consist of small groups aided by a program instructor, who serves as a resource to each cocoon group. The cocoon group members will also serve as a close peer network to provide active listening and feedback in a confidential setting.





“Beyond the learnings and experiences, I’ve made great friends with people from around the world. We formed very tight bonds both personally and professionally.”

~ Gama Sibanda
Civil Engineer, South Africa



PROGRAM TOOLS AND RESOURCES

Moodle And Email | Distance learning is supported by Moodle, an advanced online learning management system that houses all coursework, including live and recorded lectures, reference material, and assignments, discussion forums, biomimicry tools and resources, and programmatic logistical resources. Participants are also provided an email address in association with the program.

Biomimicry 3.8 Network | The ultimate goal of Biomimicry 3.8 is to train, connect, and equip a global network of biomimicry leaders who will transform the world by emulating nature's designs and core principles. The infrastructure to support this network is developing alongside the manifestation of this vision and Certified Biomimicry Professionals will not only have access to, but also be critical contributing members of this global network and key influencers for how the network takes shape.



BIOMIMICRY 3.8

Biomimicry.net | AskNature.org

ONLINE CLASSROOM

Username

Password

Cookies must be enabled in your browser

Remember username

Forgot your password? [Click to reset.](#)

moodle Visit the Biomimicry Network

You are not logged in.

BIOMIMICRY 3.8 CLASSROOM >>>>>>> EDUCATION INSPIRATION INNOVATION

All Courses My Courses Moodle Help Logout


Home > My courses > BProfessional 2011 > Life's Principles > General > LECTURE - Life Friendly Chemistry (MP4 format)

[Update this Page](#)

Navigation

- Home
 - My home
 - Site pages
 - My profile
- My courses
 - e-Learning
 - BProfessional 2011
 - Community Reef
 - Life's Principles
 - Participants
 - Reports
 - General
 - Announcements Forum
 - Learning Objectives for the Course
 - Attitudes to Thinking and Learning Survey
 - Ideal Live Meeting Times
 - Life's Principles Resource Handbook complete chapter
 - PDF of Life's Principles Powerpoint for Lectures Weeks 5-10
 - F - Introduction to

LECTURE - Life Friendly Chemistry (MP4 format)



build selectively with a small subset of elements • break down products into benign constituents • do chemistry in water

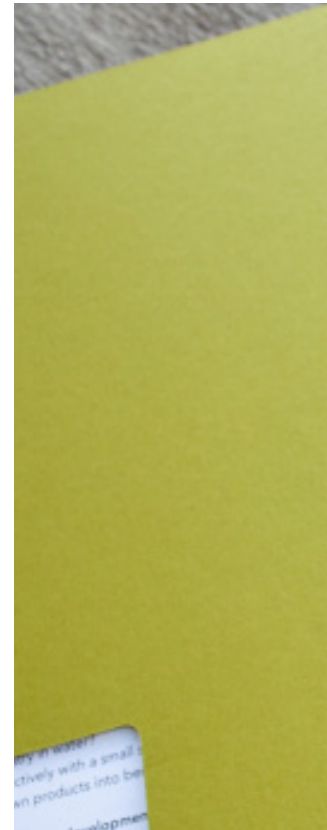
USE LIFE-FRIENDLY CHEMISTRY

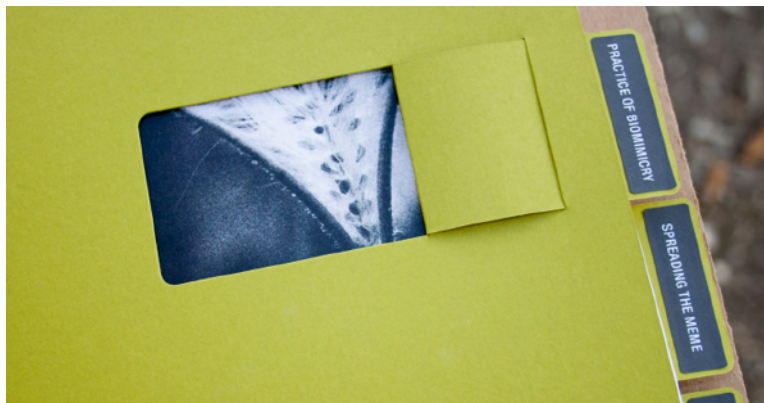
19:15 60:01

PROGRAM TOOLS AND RESOURCES

Program Textbook | *The Biomimicry Resource Handbook: A Seed Bank of Knowledge and Best Practices (2010)* will be distributed to participants during the first in-person session. The *Biomimicry Resource Handbook* is a compilation of a decade of knowledge, methods, and core biomimicry concepts condensed into a useful how-to guide. It contains the latest thinking and examples of biology integrated into design, guidance on how to present case studies, and extensive reference materials on the fundamental biomimicry categories of Life's Principles and Biomimicry Thinking.

The text is supplemented with a glossary and references, and is personalized with quotes, helpful tips, and contact information. The *Biomimicry Resource Handbook* contains over 200 pages of information and is continuously expanding as professionals and students alike help to expand it year over year.

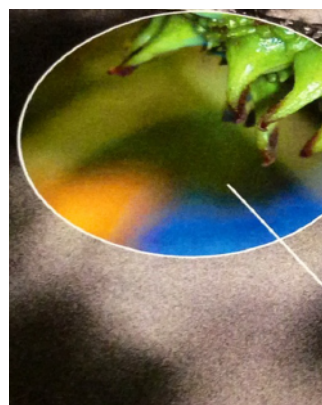




PROGRAM TOOLS AND RESOURCES

My Pathway: Session Workbooks | The *Biomimicry Resource Handbook* includes a section titled “My Pathway.” This section will be populated with a workbook of handouts, worksheets, and resources delivered at each in-person session relative to each session’s agenda.

Coursework Texts | Program instructors may require or otherwise make option additional coursework texts in support of the program’s topics and learning goals.



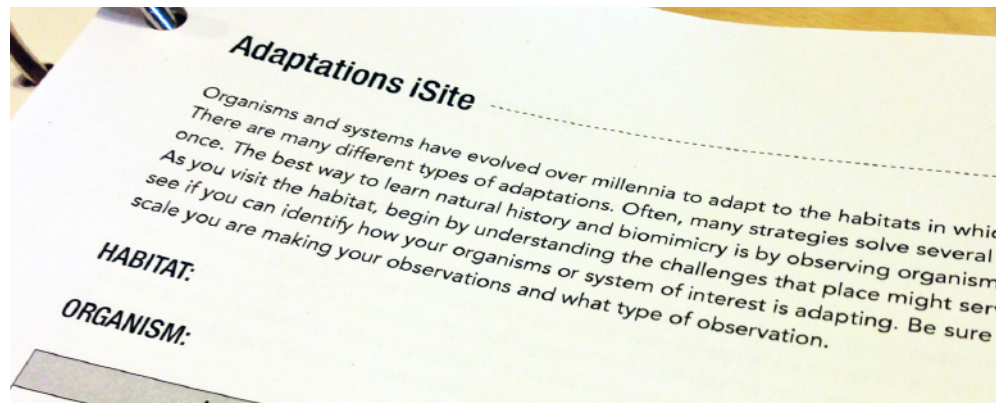
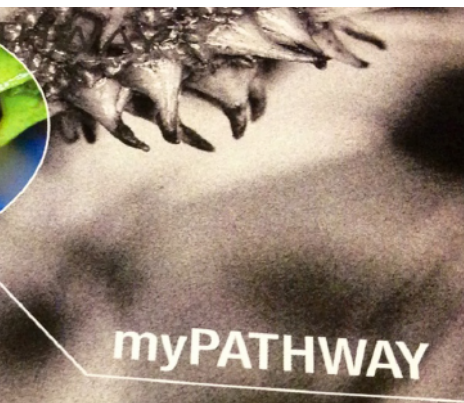
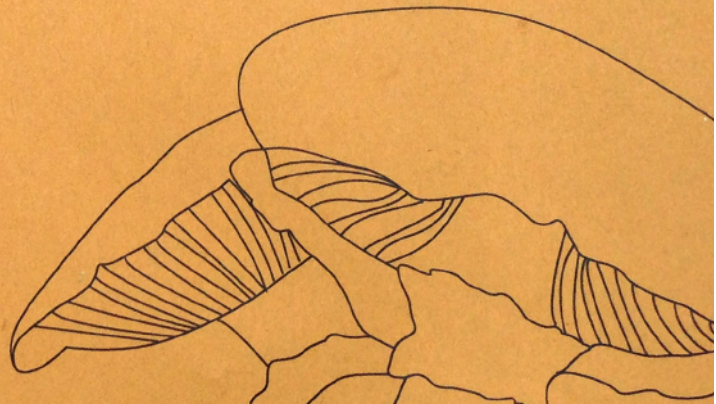
**BIOMIMICRY
PROFESSIONAL
CERTIFICATION
PROGRAM**

**Session 6:
Temperate Rainforest**

Salt Spring Island
British Columbia, Canada
September 2012

INSTRUCTORS

Dayna Baumeister, PhD, Biomimicry 3.8
Erin Leitch, CBP, Biomimicry 3.8
Claire Janisch, CBP, Biomimicry South Africa
Zeynep Arhon, CBP, TRENDDESK



PROGRAM TUITION AND FEES

Program tuition and fees include instruction, online technology fees, workshop materials, and in-person session costs (shared room, meals, local travel, and entrance fees). The tuition and fees do not include books (estimated to be less than \$200 total), travel expenses to and from the in-person session meet-up location (usually the airport), or any additional optional single room charges and personal incidentals.

All in-person sessions are specifically designed to foster a group experience and as such we will not allow for students to arrange their own accommodations and meals in order to discount the cost of their session expenses. Expenses are non-negotiable.

Expenses associated with in-person sessions as described above: \$10,500 (USD)

+

Tuition associated with enrollment as described above: \$22,500 (USD)

+

Fees associated with enrollment as described above: \$1,750 (USD)

Total program costs: \$34,750 (USD)*

* Plus an estimated travel expense (varies for each person) of \$6,000

FINANCING

Lump Sum Payment | For those who are able to make a lump sum up-front payment in September 2013, we are able to offer a 2% cash discount. Credit card payments do not apply.

Payment Plan | Program tuition, fees, and expenses are payable in installments throughout the course of the program. Whether you will require a payment plan will be discussed during your interview if and when granted, and further detailed in the program enrollment form upon acceptance to the program.

SCHOLARSHIPS

Scholarships | We are working hard to make the program accessible to the brightest early adopters, innovators, and change agents that are going to help us empower the world with nature's genius. As such, we are able to offer partial scholarships to accepted applicants that qualify for financial aid. Scholarships will be awarded on a case-by-case basis to those who have demonstrated sufficient economic need or financial hardship along with exceptional merit in alignment with the mission of Biomimicry 3.8. No scholarship will be greater than 50% of total program costs due Biomimicry 3.8.

ACCREDITATION

Although this academically rigorous and highly regarded program is not currently accredited, we are actively seeking accreditation opportunities

APPLYING FOR THE PROGRAM

that are appropriately aligned with the vision and mission of the program as well as the professional needs of its participants. We anticipate having progress to announce on this front prior to the close of the application period, specifically with regards to the qualification of the Biomimicry Professional program towards a Masters of Interdisciplinary Studies.

APPLY NOW >>

Please complete your application and submit by April 26, 2013. The application fee of \$100 (USD) must be paid at the time of submitting your application. Instructions for payment are included with application.

< Biomimicry.net/educating/professional-training/bprofessional >

APPLICATION PROCESS

Upon receiving and reviewing all applications, we will notify you of your status regardless of whether you have been selected for an interview. If you have not been selected for an interview, your notification will include recommended next steps. If you have been selected for an interview, you will be directed to an online scheduling tool to schedule your telephone/online interview with Dr. Dayna Baumeister.

After all interviews have been completed, we will send out final notification of program acceptance to the 20 individuals that have been selected to participate. If you are not selected, you may be offered a wait list position in the case that a program seat opens up.

Please note, due to past experience and the expected number of applicants, the application process is very competitive.

APPLICATION SCHEDULE

Application period opens

January 7, 2013

Applications due

April 26, 2013

Selected requests for interviews sent

May 20, 2013

Notification of program acceptance

June 17, 2013

Cohort finalized

July 26, 2013

Program Kickoff

September 2, 2013

“I thought you’d like to hear the news! I’ve been promoted to report directly to our CEO of our Americas business. He will be counting on me to lead us towards Mission Zero, specifically using Biomimicry as an innovation tool. Wow! I’d like to thank you for contributing to my success so deeply. I have learned much from you, in terms of the art and science of Biomimicry, and also as a mentor. I am grateful for your guidance in cultivating my leadership.

~ Lindsay James,
Director of Strategic Sustainability, Interface
BProfessional candidate 2013

